



5 MINUTES FROM THE RIVER MARKET  
15 MINUTES TO KCI AIRPORT



[HOME](#) / [HIGHLIGHTS](#) / [FLOOR PLANS](#) / [SITE PLAN](#) / [AMENITIES](#) / [LABOR MARKET/DRIVE TIMES](#) / [LOCATION](#) / [AERIAL VIEW](#)

# THE PARKWAY TOWER BLDG

BRIARCLIFF PARKWAY & US 169 / KANSAS CITY, MO

# THE PARKWAY TOWER BLDG

BRIARCLIFF PARKWAY & US 169 / KANSAS CITY, MO

## PROPERTY HIGHLIGHTS

- Briarcliff is a premiere, Class “A” mixed-use office, retail and residential development, over 630,000 SF of commercial space and 1,200 residential units
- Close in location in the heart of the metro area, within 10 minutes of Downtown, River Market and Crossroads
- Proposed eight story, 190,000 SF office building, masonry construction with flexible covered and surface parking
- One of the few remaining “ready to build” office sites in an established office environment conveniently located between Highway 169 and I-635
- Highly efficient building systems reflecting long-term Briarcliff ownership commitment
- Class A finishes, as illustrated by other Briarcliff Professional buildings
- Will consider a development sale, build-to-suit or joint venture
- State of Missouri incentives available for out of state relocations, which provide substantial occupancy cost savings
- On site Briarcliff property management consistently receives 95% tenant satisfaction ratings, which insures your employee comfort and security
- Due to this Central Metro location and amenities, Briarcliff Office Park historically maintains highest occupancy rates in the Kansas City area
- The proposed Briarcliff Riverfront office development has three additional office buildings consisting of over 292,000 SF



For more information visit [www.briarcliffkc.com](http://www.briarcliffkc.com)

HOME

HIGHLIGHTS

FLOOR PLANS

SITE PLAN

AMENITIES

LABOR MARKET/DRIVE TIMES

LOCATION

AERIAL VIEW

For more information, please contact:

**Suzanne Dimmel, CCIM**  
Director

+1 816 412 0271

[suzanne.dimmel@cushwake.com](mailto:suzanne.dimmel@cushwake.com)

**Craig Kelly, SIOR**  
Director

+1 816 412 0279

[craig.kelly@cushwake.com](mailto:craig.kelly@cushwake.com)

**Leonard Popplewell**  
Associate

+1 816 412 0236

[leonard.popplewell@cushwake.com](mailto:leonard.popplewell@cushwake.com)

**Andrew Greene**  
Associate

+1 816 216 5654

[andrew.greene@cushwake.com](mailto:andrew.greene@cushwake.com)

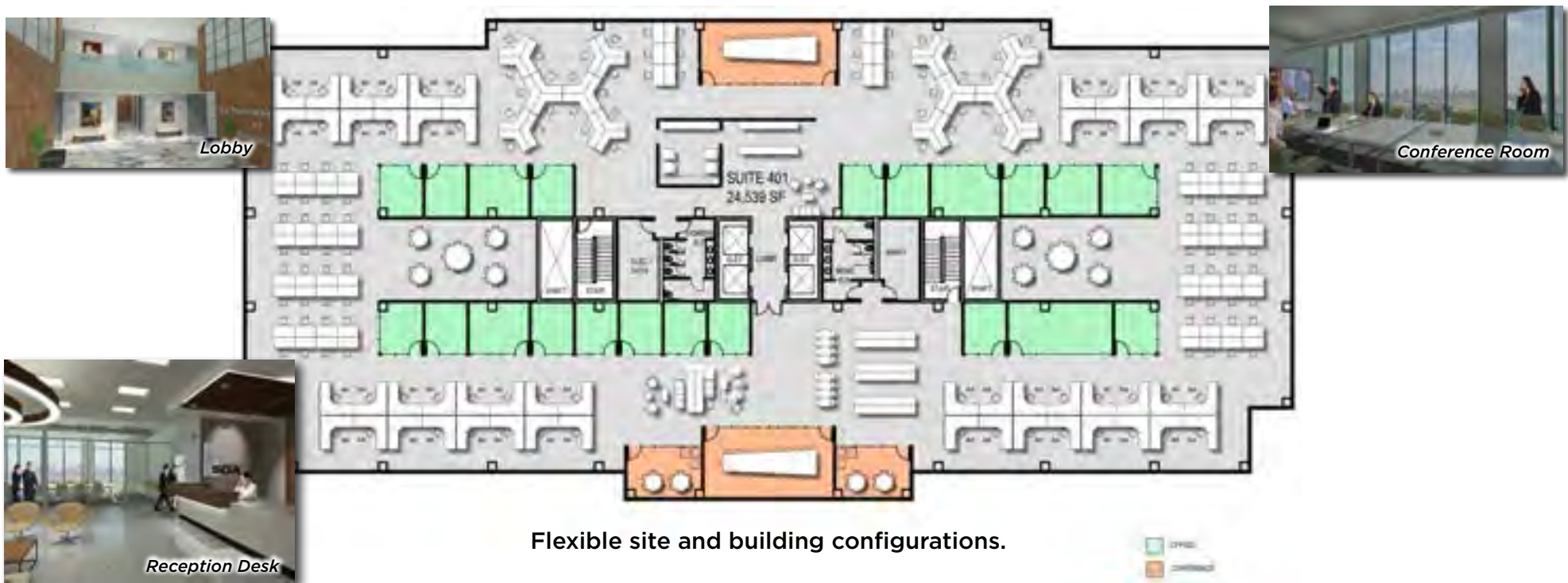
4600 Madison Avenue, Suite 800  
Kansas City, MO 64112  
Main +1 816 221 2200  
Fax +1 816 842 2798  
[cushmanwakefield.com](http://cushmanwakefield.com)

# THE PARKWAY TOWER BLDG

BRIARCLIFF PARKWAY & US 169 / KANSAS CITY, MO

## FIRST & TYPICAL UPPER FLOORS

**Briarcliff Development Company** is a locally based headquartered real estate development and management company which has completed over \$460 million in development projects in the Kansas City Metro area.



Flexible site and building configurations.



- HOME
- HIGHLIGHTS
- FLOOR PLANS
- SITE PLAN
- AMENITIES
- LABOR MARKET/DRIVE TIMES
- LOCATION
- AERIAL VIEW

For more information, please contact:

**Suzanne Dimmel, CCIM**  
 Director  
 +1 816 412 0271  
 suzanne.dimmel@cushwake.com

**Craig Kelly, SIOR**  
 Director  
 +1 816 412 0279  
 craig.kelly@cushwake.com

**Leonard Popplewell**  
 Associate  
 +1 816 412 0236  
 leonard.popplewell@cushwake.com

**Andrew Greene**  
 Associate  
 +1 816 216 5654  
 andrew.greene@cushwake.com

4600 Madison Avenue, Suite 800  
 Kansas City, MO 64112  
 Main +1 816 221 2200  
 Fax +1 816 842 2798  
[cushmanwakefield.com](http://cushmanwakefield.com)

# THE PARKWAY TOWER BLDG

BRIARCLIFF PARKWAY & US 169 / KANSAS CITY, MO

## SITE PLAN

- Briarcliff is a premier Class "A" office park, which insures long-term value appreciation.
- One of the last remaining sites on Highway 9 with direct access to I-635 and 169 Highway.



*The Parkway Tower Building*



*The Landing Apartments*

HOME

HIGHLIGHTS

FLOOR PLANS

SITE PLAN

AMENITIES

LABOR MARKET/DRIVE TIMES

LOCATION

AERIAL VIEW

For more information, please contact:

**Suzanne Dimmel, CCIM**  
Director

+1 816 412 0271

suzanne.dimmel@cushwake.com

**Craig Kelly, SIOR**  
Director

+1 816 412 0279

craig.kelly@cushwake.com

**Leonard Popplewell**  
Associate

+1 816 412 0236

leonard.popplewell@cushwake.com

**Andrew Greene**  
Associate

+1 816 216 5654

andrew.greene@cushwake.com

4600 Madison Avenue, Suite 800  
Kansas City, MO 64112

Main +1 816 221 2200

Fax +1 816 842 2798

[cushmanwakefield.com](http://cushmanwakefield.com)

# THE PARKWAY TOWER BLDG

BRIARCLIFF PARKWAY & US 169 / KANSAS CITY, MO



Briarcliff Village

## SERVICES

Buenos Aires Room and Wedding Chapel  
Burleson Orthodontics  
Eclektica  
Edward Jones  
Foundation Fitness  
Invisalign  
Pinot's Palette  
Rajeunir Medical Spa  
Royal Room at Briarcliff  
Top Cleaners/Tailor

## SHOPPING

Boutique Collective  
Budget Blinds  
California Closets  
Decori  
Design in The City  
The Foot Spot  
Lillians  
Made in KC  
Nell Hill's

## RESTAURANTS

GreenAcres Deli  
Headrush Roasters  
Jose Peppers  
PhillyTime  
Piropos  
Trezos Mare

## GROCERY

GreenAcres Market

[HOME](#)

[HIGHLIGHTS](#)

[FLOOR PLANS](#)

[SITE PLAN](#)

[AMENITIES](#)

[LABOR MARKET/DRIVE TIMES](#)

[LOCATION](#)

[AERIAL VIEW](#)

For more information, please contact:

**Suzanne Dimmel, CCIM**  
Director

+1 816 412 0271

[suzanne.dimmel@cushwake.com](mailto:suzanne.dimmel@cushwake.com)

**Craig Kelly, SIOR**  
Director

+1 816 412 0279

[craig.kelly@cushwake.com](mailto:craig.kelly@cushwake.com)

**Leonard Popplewell**  
Associate

+1 816 412 0236

[leonard.popplewell@cushwake.com](mailto:leonard.popplewell@cushwake.com)

**Andrew Greene**  
Associate

+1 816 216 5654

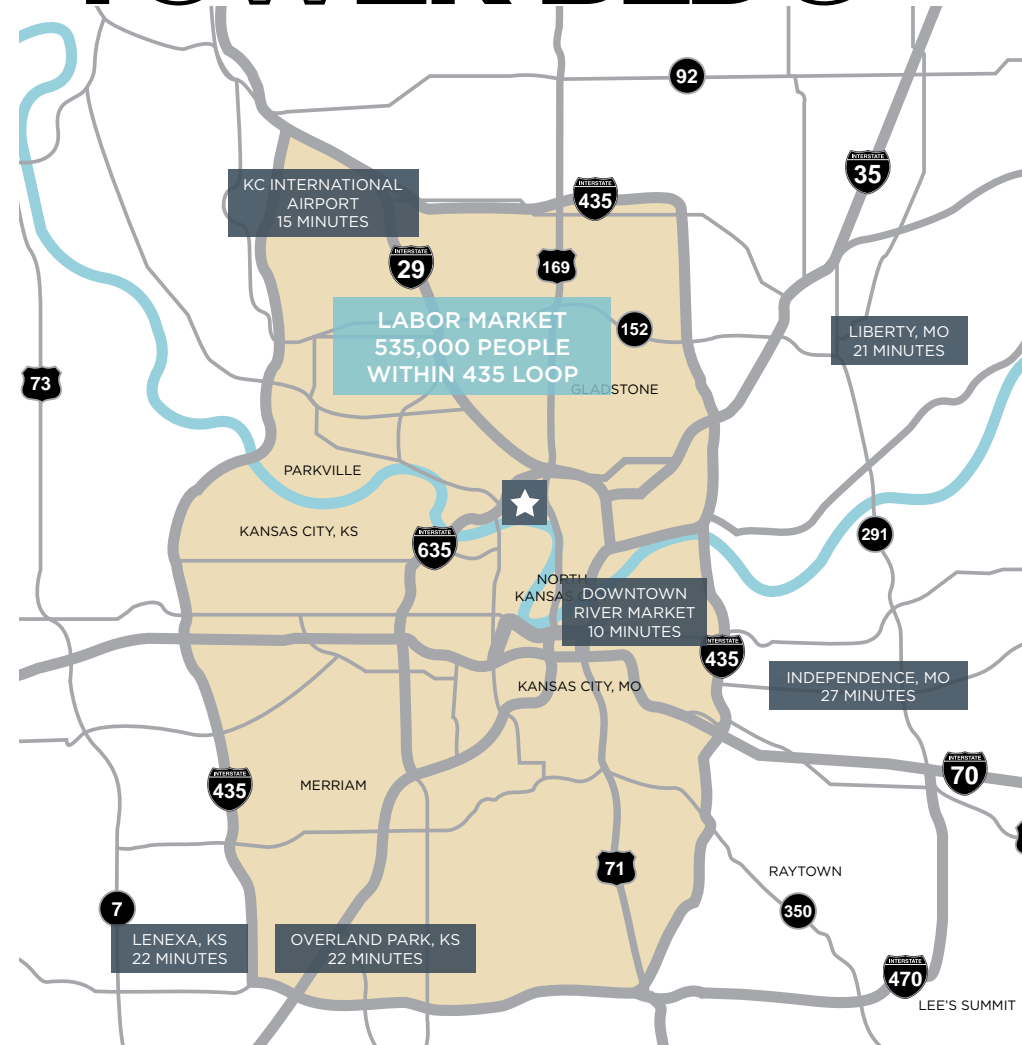
[andrew.greene@cushwake.com](mailto:andrew.greene@cushwake.com)

4600 Madison Avenue, Suite 800  
Kansas City, MO 64112  
Main +1 816 221 2200  
Fax +1 816 842 2798  
[cushmanwakefield.com](http://cushmanwakefield.com)

# THE PARKWAY TOWER BLDG

BRIARCLIFF PARKWAY & US 169 / KANSAS CITY, MO

- Moving to Briarcliff is an investment which provides long lasting value to users and occupiers
- High quality retail amenities within The Village at Briarcliff ([www.thevillageatbriarcliff.com](http://www.thevillageatbriarcliff.com))
- Two of Kansas City's highly rated regionally acclaimed destination restaurants; Trezo Mare and Piropos
- Easy access to all Metro highways and ideal location to serve the Kansas City Metro area
- Less than 22 minutes from all communities along the I-435 loop
- Easy commute for the 535,000 person labor market within the I-435 loop
- Less than ten minutes from the River Market, Downtown and the iconic Crossroads District
- On site nature trails provide hiking and biking amenities along the river
- From 2016, there have been 3,467 new jobs created in the Crossroads, Downtown and Kansas City North markets
- Center of the labor market



HOME / HIGHLIGHTS / FLOOR PLANS / SITE PLAN / AMENITIES / LABOR MARKET/DRIVE TIMES / LOCATION / AERIAL VIEW

For more information, please contact:

**Suzanne Dimmel, CCIM**  
Director

+1 816 412 0271

[suzanne.dimmel@cushwake.com](mailto:suzanne.dimmel@cushwake.com)

**Craig Kelly, SIOR**  
Director

+1 816 412 0279

[craig.kelly@cushwake.com](mailto:craig.kelly@cushwake.com)

**Leonard Popplewell**  
Associate

+1 816 412 0236

[leonard.popplewell@cushwake.com](mailto:leonard.popplewell@cushwake.com)

**Andrew Greene**  
Associate

+1 816 216 5654

[andrew.greene@cushwake.com](mailto:andrew.greene@cushwake.com)

4600 Madison Avenue, Suite 800  
Kansas City, MO 64112

Main +1 816 221 2200

Fax +1 816 842 2798

[cushmanwakefield.com](http://cushmanwakefield.com)

# THE PARKWAY TOWER BLDG

BRIARCLIFF PARKWAY & US 169 / KANSAS CITY, MO

## THE NEW NORTH

- Briarcliff is situated between Parkville and North Kansas City
- Parkville & North Kansas City Schools are in the top rated Missouri schools in the Metro area
- During 2016, 37% of the Metro housing starts were in Clay and Platte Counties, a portion of the 17% Metro increase
- During 2016 the KC Metro had \$2.49 billion in commercial and multifamily starts, a 40% increase over 2015
- 16 restaurants in North Kansas City and 2 casinos
- Sports Bars and Class A restaurants such as Trezo Mare and Piropos are within 5 minutes drive time
- North Kansas City & St. Luke's Hospitals
- Close proximity to Cerner HQ, GM Assembly Plant and the Charles B. Wheeler Downtown Airport
- In 2016, there were 741 new jobs created in Kansas City North
- North Kansas City is home to 5 microbreweries and 1 distillery



One North, the \$134 million development, has announced DRIV Golf Lounge & Brewhouse, along with retail, hotels and apartments.

HOME / HIGHLIGHTS / FLOOR PLANS / SITE PLAN / AMENITIES / LABOR MARKET/DRIVE TIMES / LOCATION / AERIAL VIEW

For more information, please contact:

**Suzanne Dimmel, CCIM**  
Director

+1 816 412 0271

suzanne.dimmel@cushwake.com

**Craig Kelly, SIOR**  
Director

+1 816 412 0279

craig.kelly@cushwake.com

**Leonard Popplewell**  
Associate

+1 816 412 0236

leonard.popplewell@cushwake.com

**Andrew Greene**  
Associate

+1 816 216 5654

andrew.greene@cushwake.com

4600 Madison Avenue, Suite 800  
Kansas City, MO 64112

Main +1 816 221 2200

Fax +1 816 842 2798

[cushmanwakefield.com](http://cushmanwakefield.com)

# THE PARKWAY TOWER BLDG

BRIARCLIFF PARKWAY & US 169 / KANSAS CITY, MO



HOME	HIGHLIGHTS	FLOOR PLANS	SITE PLAN	AMENITIES	LABOR MARKET/DRIVE TIMES	LOCATION	AERIAL VIEW
------	------------	-------------	-----------	-----------	--------------------------	----------	-------------

For more information, please contact:

**Suzanne Dimmel, CCIM**  
**Director**  
 +1 816 412 0271  
[suzanne.dimmel@cushwake.com](mailto:suzanne.dimmel@cushwake.com)

**Craig Kelly, SIOR**  
**Director**  
 +1 816 412 0279  
[craig.kelly@cushwake.com](mailto:craig.kelly@cushwake.com)

**Leonard Popplewell**  
**Associate**  
 +1 816 412 0236  
[leonard.popplewell@cushwake.com](mailto:leonard.popplewell@cushwake.com)

**Andrew Greene**  
**Associate**  
 +1 816 216 5654  
[andrew.greene@cushwake.com](mailto:andrew.greene@cushwake.com)

4600 Madison Avenue, Suite 800  
 Kansas City, MO 64112  
 Main +1 816 221 2200  
 Fax +1 816 842 2798  
[cushmanwakefield.com](http://cushmanwakefield.com)